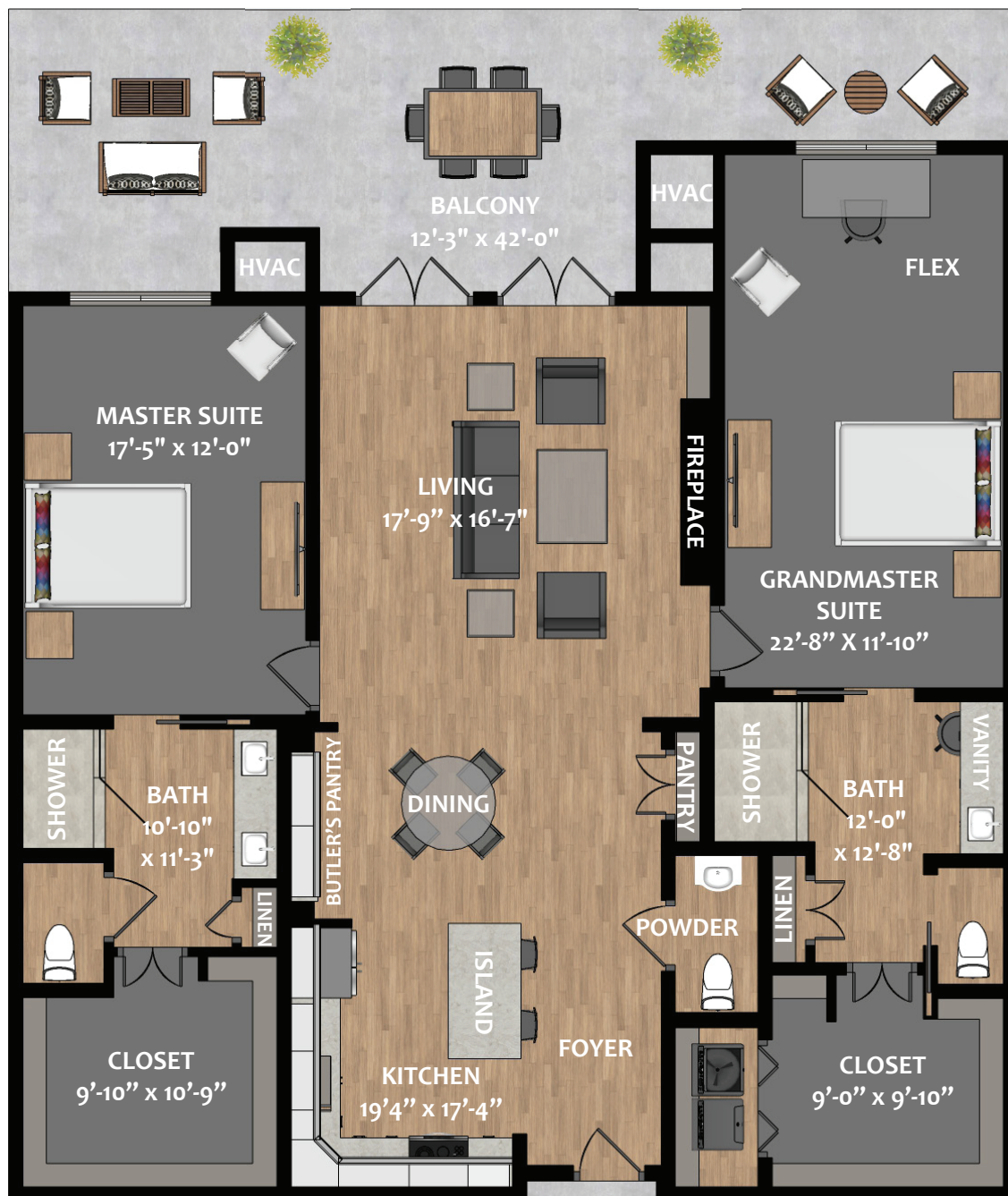


# The Trillium

2 BEDROOM, 2.5 BATH  
1,709 SF + BALCONY 91 SF



The Trillium's open plan offers a spacious living room with fireplace, kitchen with island, butler's pantry and powder room. Double French doors lead to an expansive balcony. The grand master suite has a full bath with linen storage and a spacious walk-in closet with laundry. The master suite has a full bath with double sinks, linen storage and a large closet space.

*Square footage is approximate. All renderings are subject to change.*