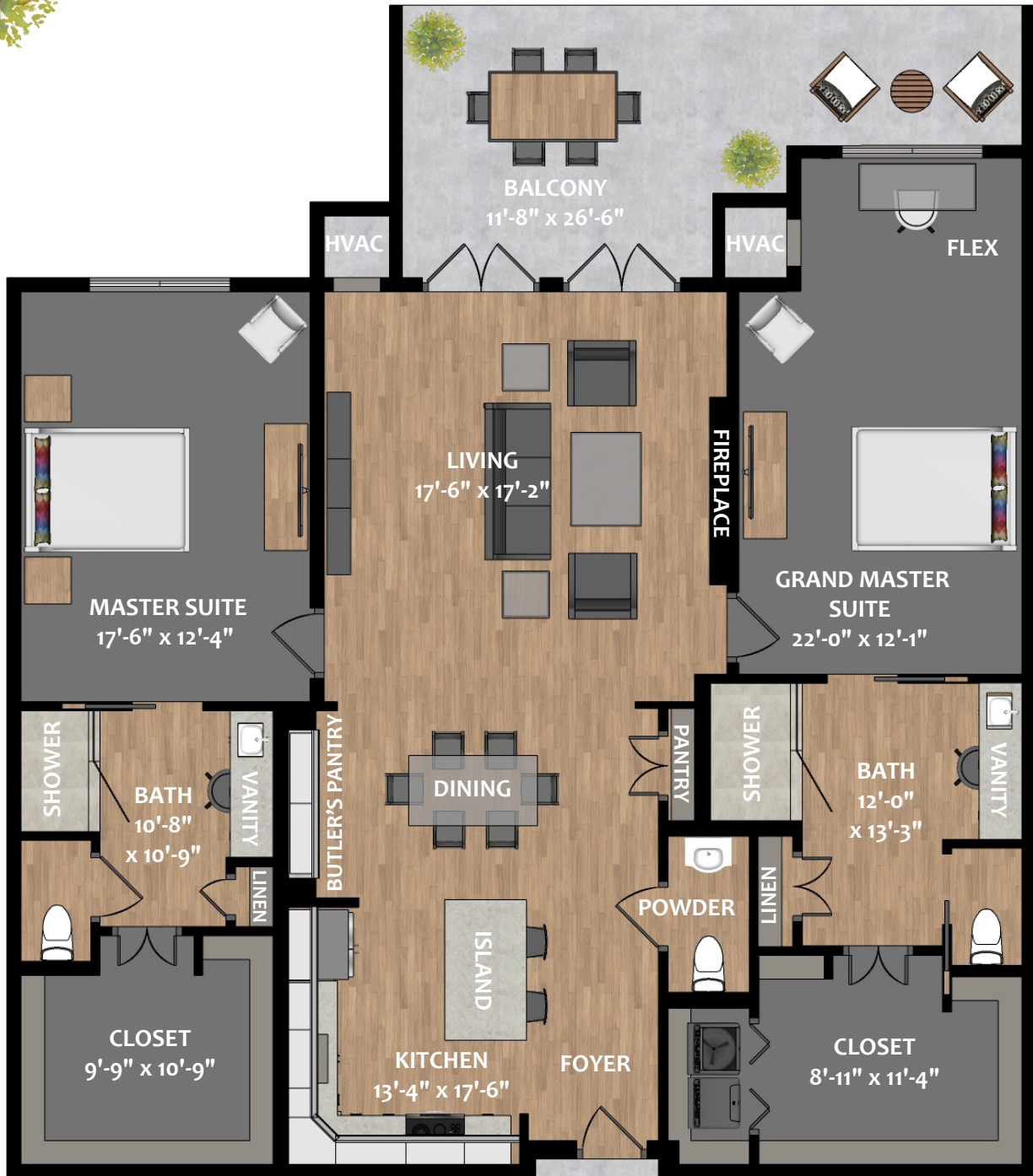


The Poplar

2 BEDROOM, 2.5 BATH
1,714 SF + BALCONY 305 SF



The Poplar's spacious great room features a fireplace and double French doors leading to the private balcony, kitchen with island, dining area, butler's pantry and powder room. The grand master suite has space for an office or sitting area with a view of the balcony, full bath with linen storage, laundry and a spacious walk-in closet. The master suite offers full bath, linen storage and a large walk-in closet.

Square footage is approximate. All renderings are subject to change.